



LAURELMEAD

Rhode Island's Only Resident-Owned Retirement Community



A COMMUNITY WITH A DISTINGUISHED REPUTATION

Laurelmead is a community designed to meet the diverse wants and needs of seniors. Located on Providence's charming and historic East Side, it's only five minutes away from downtown's many dining, cultural, and educational venues.

Laurelmead's reputation is based on its:

- shareholder ownership and financial stability
- fine and casual dining
- numerous apartment styles at affordable prices
- inviting common areas for hosting small or large events
- modern fitness center with an indoor heated pool and hot tub
- wide range of in-house recreational, cultural, and informative programs
- helpful and dedicated staff

We take pride in diversity and honor all experiences, viewpoints, and backgrounds.

Come visit Laurelmead if you are looking to enrich your life, revive your personal relationships, and foster your health and comfort.



BENEFITS TO BEING AN OWNER

Cooperative ownership benefits:

The finest form of representation is “by the people, for the people.” This is the heart of Laurelmead’s philosophy. Resident shareholders determine the policies of Laurelmead and govern through the Board of Directors and six advisory committees that are selected via annual elections.

Putting it in perspective:

Current residents have the best perspective and as part of their leadership commitment, Board members and other shareholders are available to speak with you. Call the Sales Director to make an appointment to get the “inside scoop” on the Laurelmead lifestyle.



ENRICH YOUR LIFE BY STAYING ACTIVE

Laurelmead residents enjoy an active, independent, and stimulating lifestyle. Thanks to our extensive and diverse activities, there is never a shortage of things to do. The Activities Committee coordinates so many programs, most people say the challenge is in deciding what to do next.

In addition to our social and cultural activities, Laurelmead boasts a modern fitness center that includes an indoor heated swimming pool and hot tub. Water aerobics, tai chi, yoga, strength, and cardio training – try them all. Our certified fitness staff is devoted to keeping you active and healthy by developing an exercise plan that suits your particular abilities and needs.

Don't take our word for it. Call the Laurelmead Sales Director at 401-273-9550 to request a copy of the monthly calendar or weekly bulletin.



YOU MAY BE READY AFTER ALL

“But I’m not ready yet” is how many seniors feel when exploring retirement communities. We understand that making the decision to move is a significant one and can be daunting. But as one of our residents so eloquently said, “If you wait until you’re ‘ready,’ you may miss the best part!”

Isn’t it reassuring to know that most of our residents find themselves so reinvigorated by their new lifestyle and social network, they wonder why they waited so long.

You may be ready after all!

Come and spend some time with us. A short stay in one of our guest suites could be all you need to answer the question, “What am I waiting for?”



GAINING SO MUCH WHILE LOSING SO LITTLE

Moving has its challenges, yet we often hear our residents say they don't miss household chores or other responsibilities such as mowing, shoveling, raking, changing lightbulbs, doing laundry, and especially washing dishes.

Laurelmead is a change – for the best!

Here's what you can look forward to:

Varied apartment sizes and styles:

- Studio
- One bedroom
- One bedroom with den
- Two bedrooms
- Two bedrooms with den
- Penthouse/Custom

A dedicated staff:

- Dining
- Maintenance
- Security
- Transportation
- Concierge
- Fitness
- Housekeeping
- Activities
- Health Services Coordinator

We also have:

- General Store
- Salon/Barber
- Library
- Private gardens
- Walking trails



SIMPLIFY LIFE WHILE LIVING BETTER

Simplifying definitely has its advantages. Living at Laurelmead takes some of the worry out of running a household. **Garden if you want to** – but eliminate housework, chores, and home repairs. Laurelmead staff handles the cleaning, landscaping, and maintenance. **Cook if you want to** – every apartment has a full kitchen, and you have the option of enjoying delicious meals prepared by trained chefs in the dining room, pub, and café. Or order take-out and eat in the privacy of your own home. **Drive if you want to** – however, drivers are available for scheduled transportation and chauffeured outings and adventures.

One all-inclusive monthly fee simplifies your household budget. Here are just a few things included in your monthly fee:

- 30 meals per month
- all utilities (except telephone)
- twice-monthly housekeeping
- scheduled transportation within five miles of Laurelmead
- all social, educational, recreational, fitness, and cultural activities
- local real estate tax

A helpful and well-trained staff is on duty 24/7/365. You have your privacy but you're never alone.



OUR MULTI-GENERATIONAL LIFESTYLE

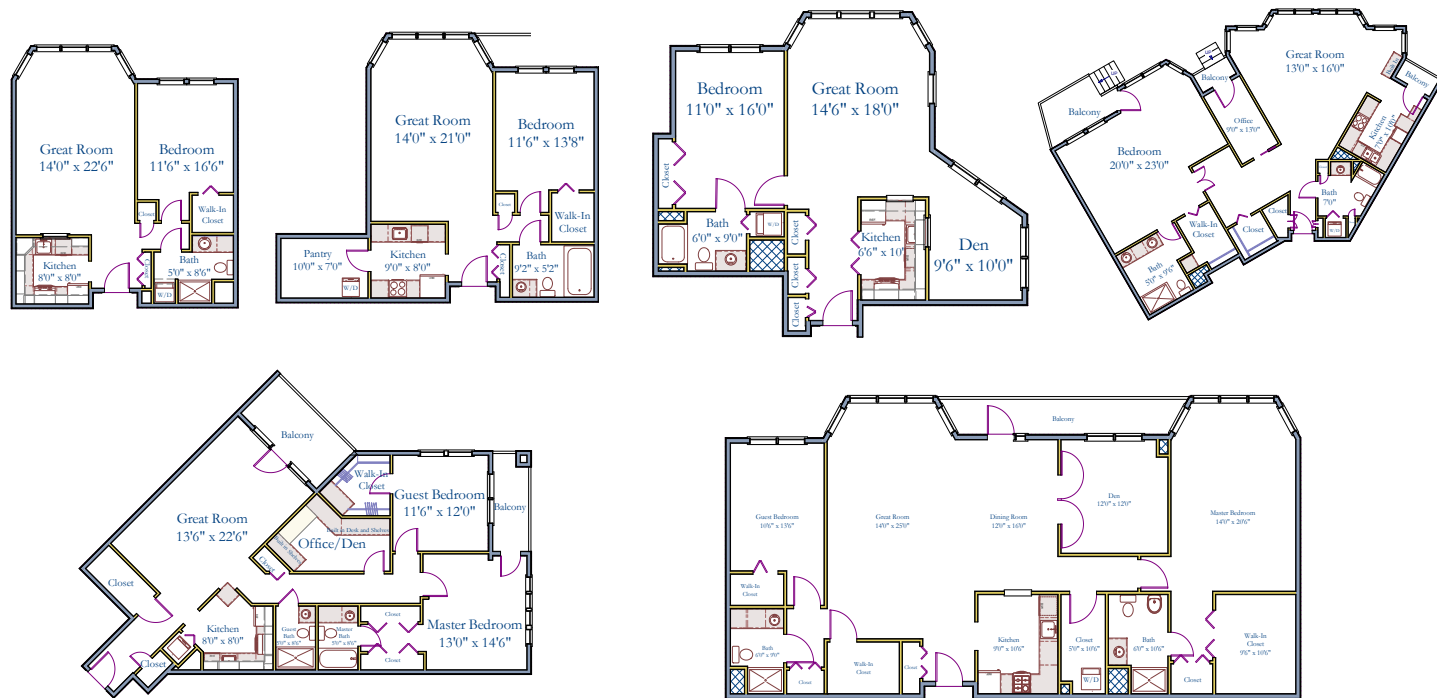
The next generation of resident shareholders will consist of “baby boomers” from diverse backgrounds. This diversity promotes acceptance and an understanding of different opinions, ideas, and perspectives. What remains a constant with all age groups, is a need for a clean, quiet, comfortable home where they can grow and learn and meet new friends.

Laurelmead residents in their 60’s and 70’s have settled in and are thoroughly enjoying the companionship of their new neighbors – some from the same generation, some from their parents’ generation. The spirit and love-of-life shown by our 80 and 90 year old residents is so impressive, they are an inspiration to all who live at and visit Laurelmead.

Friendship is ageless after all.

FROM ONE BEDROOM TO PENTHOUSE...

LAURELMEAD MAY BE PROVIDENTIAL!



When you come to Laurelmead be sure to visit some of the many tourist destinations throughout Providence and Rhode Island:

Theaters: Trinity Repertory Company, The Gamm, Providence Performing Arts Center, Black Rep, 2nd Story Theater, Ocean State Theater, and Theatre-By-The-Sea

Museums: Rhode Island School of Design, Roger Williams, John Brown House, Blithewold Mansion and Gardens, the Newport Mansions, and The Whaling Museum in nearby New Bedford, Massachusetts

Music: Veterans Memorial Auditorium, Opera Providence, Rhode Island Philharmonic, and the Newport Jazz Festival

Higher Education: Brown University, Rhode Island School of Design, Providence College, Johnson & Wales University, Rhode Island College, Roger Williams University, Bryant University, Salve Regina University, and the University of Rhode Island

Restaurants: too many to name but hundreds, with many of New England's finest

Beaches: South County, the East Bay, and Newport

And Providence's world-famous **WaterFire** is a must see.

There is so much to do here. If you are tempted by day trips to Boston or New York City, AMTRAK's train station is only 5 minutes away and TF Green Airport is just a 15 minute drive.

AND EVERYTHING IN BETWEEN!



MY PROMISE TO YOU

Thank you for your interest in Laurelmead Cooperative. My job is to provide you with all of the information you need for selecting your new home. I understand the magnitude of this decision and am here to help you reach the best possible result.

To achieve that result, I promise:

- to learn about your needs, challenges, and preferences
- not to pressure you into a decision
- to inform you of your options
- not to waste your time with things that neither interest nor help you

I'm looking forward to making your transition as effortless as possible. Schedule a tour so you can experience the Laurelmead lifestyle for yourself.

Laurelmead. Now is the time!

Respectfully,

Foy Ann Plohr
Sales and Marketing Director

Call 401-273-9550 or visit our website www.laurelmead.com for more information.



LAURELMEAD

Rhode Island's Only Resident-Owned Retirement Community

355 Blackstone Boulevard, Providence, RI 02906 (401) 273-9550 www.laurelmead.com

DIRECTIONS TO LAURELMEAD

From Route 95 either Northbound or Southbound, take Exit 24, Branch Avenue. From the North take a left off the exit onto Branch Avenue. Coming from the South: take a right off the exit onto Branch Avenue. Follow through to first traffic light at North Main Street. Take a left (watch for green arrow) onto North Main Street to first traffic light at Rochambeau Avenue. Take a right on Rochambeau Avenue. Follow through to bottom of the hill to Blackstone Boulevard. Cross Blackstone Boulevard, take a left and first right at 345 Blackstone Boulevard (Butler Hospital Campus). Follow signs to Laurelmead.

From Route 146 South, take the Branch Avenue exit, #24. Take a left off the exit onto Branch Avenue. Follow through to the 7th traffic light at North Main Street. Take a left (watch for green arrow) onto North Main Street to first light at Rochambeau Avenue. Take a right onto Rochambeau Avenue. Follow Rochambeau to the bottom of the hill to Blackstone Boulevard. Cross Blackstone Boulevard, take a left and first right at 345 Blackstone Boulevard (Butler Hospital Campus). Follow signs to Laurelmead.